

# Post 16 Provision in the HKR Locality

---



**Harrogate**  
**Knaresborough**  
**Ripon**  
Locality Board

# Project

---

**Part 1** *Raise the profile of Post 16 provision in the HKR locality*

**Part 2** *Explore programmes to support wider participation – cultural capital, enrichment, extra-curricular (health wellness and leisure) for those in Post 16 education.*

# Key Performance Indicators

---

1. Showcase of lived experiences of young adults with SEN in HKR.
2. Survey results of parents/carers and young people will demonstrate that they are now better informed and feel they have a choice for Post 16 provision and pathways.
3. Increase in hits on Post 16 webpages from all settings as social media films increase reach.

# Lead Education Providers for Project

---



HARROGATE  
COLLEGE



# Background : Project 1 Raising the Profile of Post 16 provision

---

The locality board recognised there was a gap in support for pupils and families to understand education and training options Post 16 across the district.

## Knowledge and Understanding

Fear of what next steps might be like e.g. A GFE College

A lack of understanding about pathways to independence and employment e.g. supported internships

Visibility of role models.

## Impact

Families make choices without all the information, staying with what they know.

A lack of progress towards independence for students.

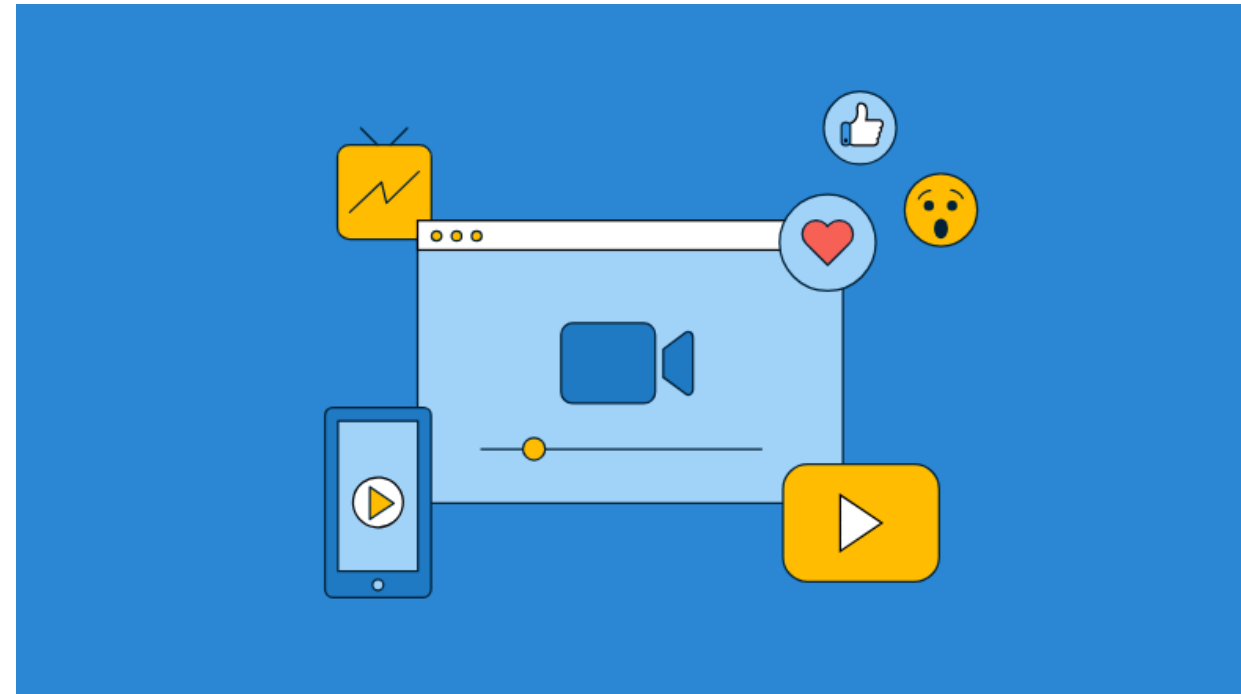
# Challenges to Success of the Project



# Solution: Video Stories

---

- Target the audience through social media and paid ads.
- Get students to tell their stories
- Show the different settings and how they feel
- Change videos for different audiences.



# The Process

---

We commissioned Deadline Digital to develop ideas for the content.

It was agreed on the content of the videos:

- What are the destinations in HKR
- What are the different pathways post 16.



It was agreed on the themes of the video:

- Young people telling their story including
  - Their journey
  - The support they had
  - Their current and aspirational destinations after their course
- Show the environment of the setting inside and outside the classroom.



# The Outcome: HKR Locality Board - Post 16 Pathways Overview

---



# Background : Project 2 Explore Programmed to Support Wider Participation

---

For existing post 16 learners, there are gaps in widening participation including cultural capital, enrichment, extra-curricular activities.

## Knowledge and Understanding

With small cohorts of learners in many settings, peer networks can be limited e.g. LGBTQ+

Small cohorts creates challenges to the breadth of offer.

The opportunity to mix with a diverse cohort of peers

## Impact

Missed opportunities to develop friendships with peers across locality.

A loss of role models

A limited breadth of extracurricular experiences.

# Key Performance Indicators (KPIs):

---

1. Increase in pupils attending alternative settings for extra curriculum or enhanced curriculum opportunities.

# Impact so far....

---

## YEAR 1 - 2022-23

The impact to date has been limited.

The development of the project in year created challenges to align time and space for students to travel.

Crating a sustainable model based on high travel costs and small budgets.

## YEAR 2 – 2023-24

Shared enrichment calendar to plan in collaboration

Planned project dates in academic year

Planned infill of students into curriculum and enrichment to support progression.

Budgeting for the project

Digital solutions to reduce transport costs and promote independence



